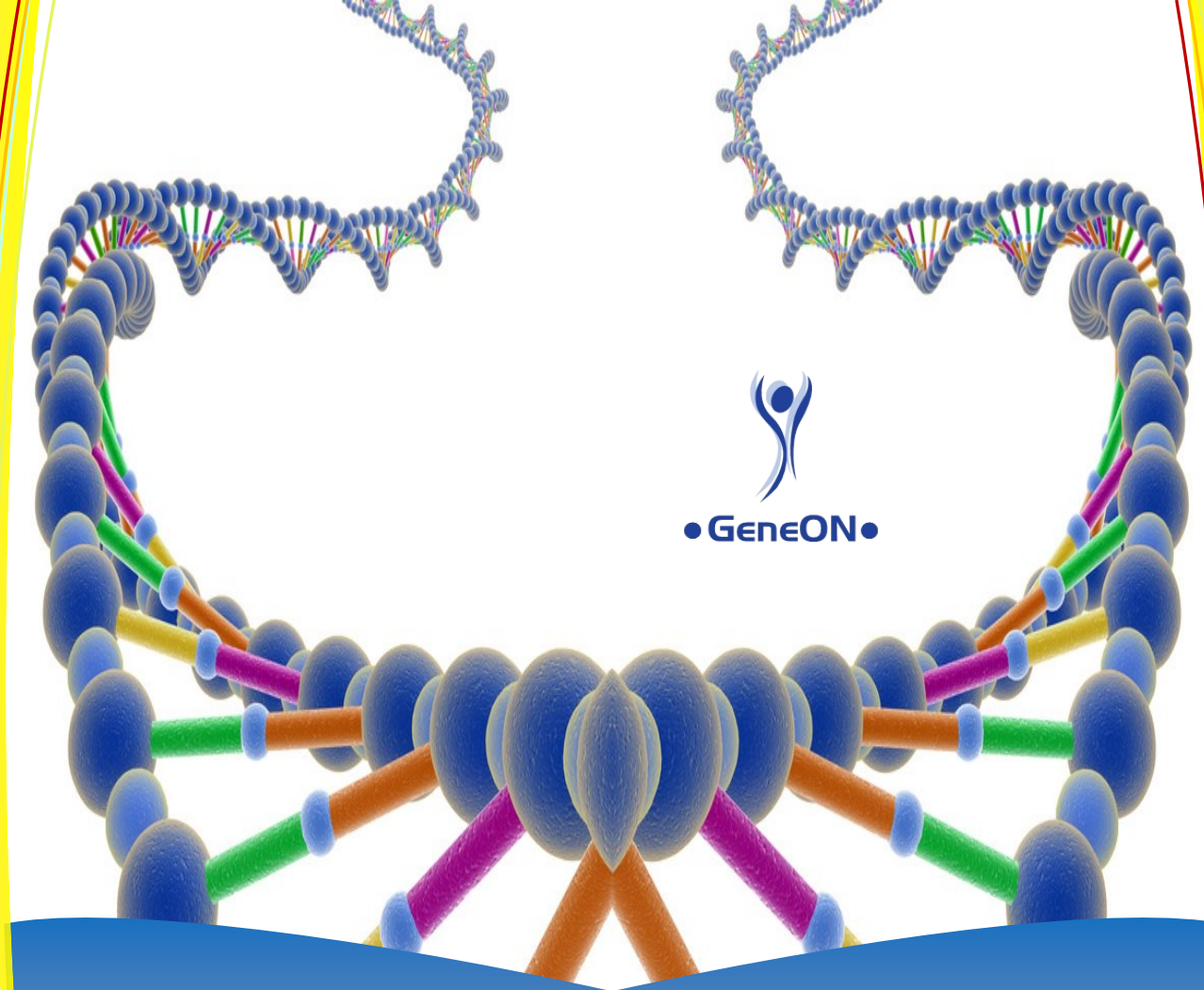


Productlist

Description	Cat.-no	Amount
GENE`s Protein Ladder PS10 PLUS prestained (10 bands, 11 - 180 kD)	310003	500µl
GENE`s Protein Ladder PS11 prestained (11 bands, 10 - 175 kD)	310005	500µl
GENE`s Plus Protein Ladder PS13 prestained (13 bands, 5 - 245 kD)	310010	500µl
GENE`s XXL Protein Ladder prestained DeLuxe (10 bands, 10 - 260 kD)	310007	2x250µl
GEL STAINING Maximo-Gel juice fluorescent gel stain (100X)	310012	10 ml



Protein Markers

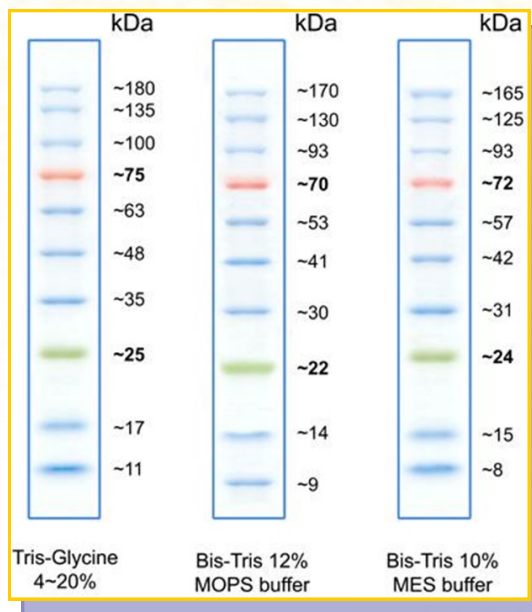
www.geneon.technology

Protein Marker PS10 Plus

The Protein Marker PS10 PLUS is a mixture of 10 purified proteins which are re-dissolved 'ready-to-use' in loading buffer. The 10 sharp bands in the range of 11-180 kDa when analyzed by SDS-PAGE and stained with optimized dyes. The marker is ready-to-use. There is no need to boil.

Applications

- Monitoring of protein migration during SDS-polyacrylamide gel electrophoresis.
- Monitoring of protein transfer onto membranes during Western blotting.
- Sizing of proteins on SDS-polyacrylamide gels and Western blots.



Number of bands

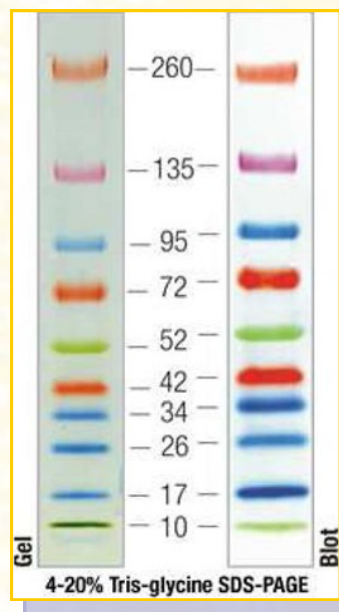
11, 17, 25, 35, 48, 63, 75, 100, 135, 180 kDa

Protein Marker XXL DeLuxe

Protein Marker XXL DeLuxe is a mixture of 10 coloured proteins. These proteins are recombinantly produced in E.coli, highly purified, and supplied 'ready to use' in loading buffer. The protein concentrations are optimized to yield well-defined bands directly visible in SDS-polyacrylamide gels. The marker is ready-to-use. There is no need to boil.

Applications

- Monitoring of protein migration during SDS-polyacrylamide gel electrophoresis.
- Monitoring of protein transfer onto membranes during Western blotting.
- Sizing of proteins on SDS-polyacrylamide gels and Western blots.



Number of bands

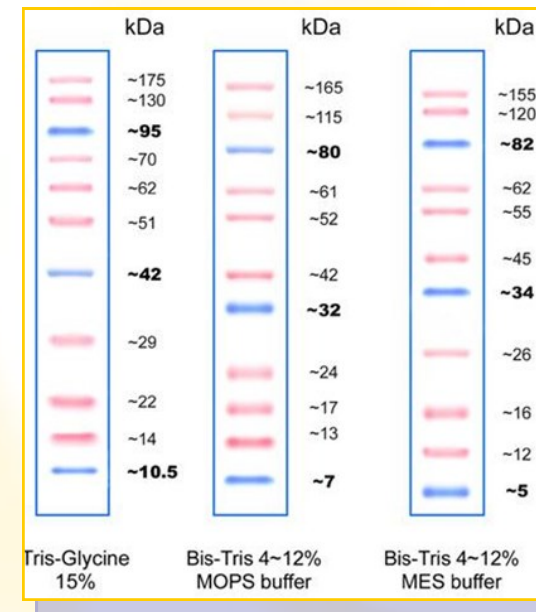
10, 17, 26, 34, 42, 52, 72, 95, 135, 260 kDa

Protein Marker PS11

Protein Marker PS11 contains 11 proteins that resolve into sharp, tight bands in the range of 10-175 kDa. The Protein Ladder allows to monitor molecular weight separation during electrophoresis, estimate molecular weights. The marker is ready-to-use. There is no need to boil. Includes the ~10, ~40 and ~95 kDa reference bands coupled with a blue dye.

Applications

- Monitoring of protein migration during SDS-polyacrylamide gel electrophoresis.
- Monitoring of protein transfer onto membranes during Western blotting.
- Sizing of proteins on SDS-polyacrylamide gels and Western blots.



Number of bands

10.5, 14, 22, 29, 42, 51, 62, 70, 95, 130, 175 kDa