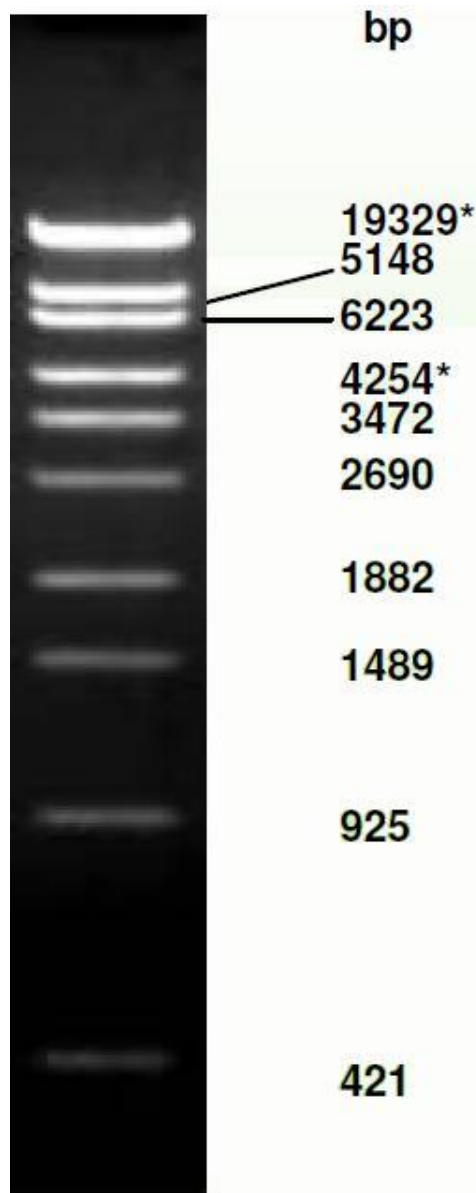


Phage Lambda DNA Styl digest



1 % Agarose

Features: Supplied in 6X Loading buffer

Description/Preparation:

The Styl digest of phage-DNA yields the 11 fragments. Lambda DNA was completely digested by Styl, phenol extracted, ethanol precipitated, dissolved in 10 mM Tris-HCl (pH 8.0) and 1 mM EDTA. **The marker is ready-to-use.**

Usage: 0,5 µg/lane

Concentration: 0,1 - 0,5 µg/µl

Number of bands: 11 19329*, 7743, 6223, 4254*, 3472, 2690, 1882, 1489, 925, 421, 74

Loading:

Agarose Gel / Polyacrylamide Gel

- Vortex gently before using
- apply 0,5 µg (agarose) or 0.5-0.9 µg (polyacrylamide gel) per 1 mm lane

Quantification:

See the graph for the percentage of the bands per band in ng, relating to 0.5 µg loaded marker. Use the same volume of DNA and marker. Additionally the concentration of loading buffer in samples and marker should be equal.

Note:

Dilute in TE or other buffer of minimal ionic strength. DNA may denature if diluted in dH₂O and subsequently heated.

*The cohesive ends (12b cos site of bacteriophage) of fragments 19329 bp and 4254 bp may anneal to and form the additional band. These fragments may be separated by heating to 65oC for 5 min and then cooling on ice for 3 min.

Transportation: Shipped on blue ice or room temperature

Storage: at -20°C for 24 months

Ordering information:

Cat.-no	Description	Amount
300015	Phage Lambda DNA Styl	2 x 100 µg
300016	Phage Lambda DNA Styl	5 x 200 µg

.. a good decision ..

GeneON .. a good decision ..

Contact Phone +49-(0)-621- 5720 864 Fax: +49-(0)-621-5724 462

E-Mail: <mailto:info@geneon.net> WEB: <http://www.GeneOn.net> Version: 10.2009 UK

Unless specified otherwise, all products of GeneON are sold for research use only.