



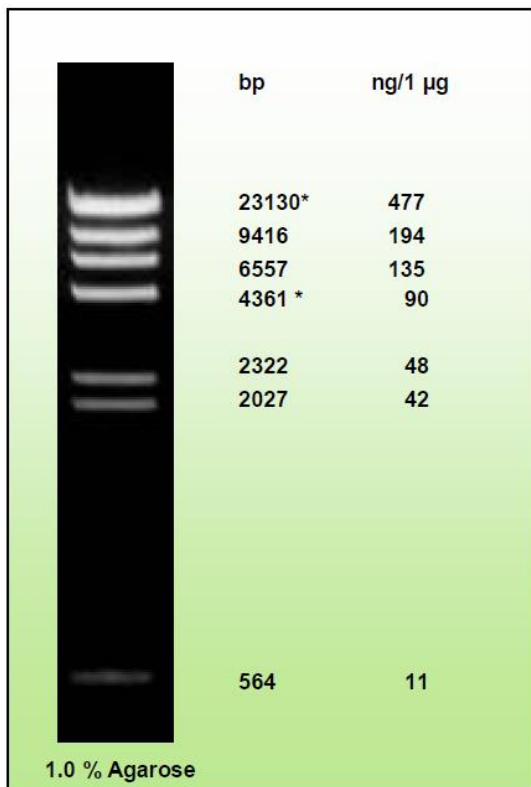
Phage Lambda Hind III digest

Description

The *Hind* III digest of λ DNA yields the following 8 discrete fragments (in base pairs): 23130*, 9416, 6557, 4361*, 2322, 2027, 564, 125.

Form

Liquid. Supplied in 6X Green Gel-Loading Buffer



Concentration

0.2 µg/µl

Preparation

Lambda DNA was completely digested by *Hind* III, phenol extracted, ethanol precipitated, dissolved in 10 mM Tris-HCl (pH 8.0) and 1 mM EDTA.

Storage: -20°C

Transport: Blue Ice

Note

Dilute in TE or other buffer of minimal ionic strength. DNA may denature if diluted in dH₂O and subsequently heated.

*The cohesive ends (12b cos site of bacteriophage) of fragments 23130 bp and 4361 bp may anneal to and form the additional band. These fragments may be separated by heating to 65°C for 5 min and then cooling on ice for 3 min.

Ordering information:

Cat.-no	Description	Amount
300030	Phage Lambda DNA Hind III	200 µg
300031	Phage Lambda DNA Hind III	500 µg

.. a good decision ..